

PharmaJet®



Injector-0.1mL



Syringe-0.1mL
Needle-free



Filling Adapter

Helpful Tips

Important:

Before you use your PharmaJet Tropis Needle-free Injection device, please read the Instructions For Use and these Helpful Tips completely. Follow the directions carefully when using the Tropis device.



Refer to Instructions for Use to ensure safe injections and to review risks.

Verify if the Injector is in the charged or uncharged state by confirming the position of the Injector Hammer.

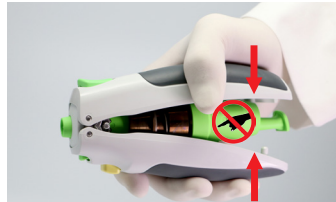


Uncharged



Charged

DO NOT open the Handles when the Injector is charged. If the Injector is charged and the Handles are open, DO NOT touch internal components; close the Handles.



After an injection, eject the Syringe and keep the Injector closed for storage.

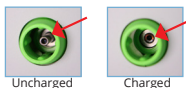


DO NOT dry fire the Injector. Repeated dry firing will damage the Injector. Dry firing is activating the Injector with either an empty Syringe or without a Syringe.



1. Prepare the Injector

a. Verify the Injector is in the uncharged state, by confirming the Injector Hammer is visible.



NOTE: If the Injector is in the charged state, as shown to the left, DO NOT open the Handles, proceed to **Section 2. Fill Syringe**. If Handles are partially open, as shown below, DO NOT touch internal components, close the Handles and proceed to **Section 2. Fill Syringe**.



b. When the Injector is in the uncharged state, as shown above, open the Handles to prepare the Injector. Press the rear Injector Latch Button to allow the Injector Hammer to open freely.



c. With the Injector Handles fully open, squeeze the Handles until they close and are locked in place. Once the Injector Handles are closed, ensure the Injector Hammer is recessed indicating the Injector is charged.



Handles Fully Open

Handles Locked in Place

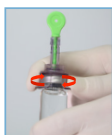
2. Fill Syringe



a. Remove the green protective cap from the Syringe.



b. Place Syringe into top of Filling Adapter. Push down and twist to lock Syringe into place.



c. Remove protective sleeve from the spike. Insert the Filling Adapter spike into the vial with a twisting motion until it is fully seated.



d. Invert the Adapter/Syringe assembly. Pull down Plunger to draw fluid into Syringe. Remove bubbles as required.

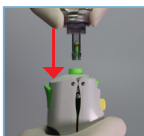


e. Complete filling by aligning red rubber ring with the fill line.



f. Snap off end of Plunger protruding from Syringe at neck and discard.

3. Load Injector



a. Insert the Syringe and Vial Assembly into the Inner Core Housing of the charged Injector until it "clicks" into place.



b. Reinvert the assembly and remove the Filling Adapter and vial from Syringe using a counterclockwise turn.

4. Give Injection

NOTE: If needed, remove protective Syringe Cap.



a. With forefinger, depress and hold the Injector Safety Button. This allows the Inner Core Housing to retract freely.



Deltoid Injection



Lateral Thigh Injection

b. While holding the Safety Button, press the Syringe perpendicular to the injection site. Once the Inner Core Housing is retracted, it is not necessary to hold the Safety Button as long as you keep pressure on the patient and the Inner Core Housing remains retracted.

To inject, depress Activation Button with thumb. A "click" will be heard upon injection.



c. Immediately following injection, apply pressure to injection site with cotton or gauze for 60 seconds and then apply an adhesive bandage.



d. Remove Syringe from the Injector by pressing the Eject button, and dispose of Syringe in accordance with local requirements.